

# GENERAL BROCHURE



**WE CLEAN THE AIR OF THE WORLD**

**DÜNYANIN HAVASINI TEMİZLİYORUZ**



# AIR FILTERS

## INTERNATIONAL CLASSIFICATION

# STANDARDS

Group	Designation	European Filter Class	MERV Rating	Recommended Final Pressure Drop (Pa)	Average Arrestance (Am) of Synthetic dust (%)	Average Efficiency (Em) of 0.4µ Particles (%)	Minimum Efficiency for 0.4µ Particles (%)	NEW STANDARD ISO 16890			
								EN 779-2012	ASHRAE 52.2	ISO ePM1	ISO ePM2,5
COARSE	G	G1	MERV 1	250	50 ≤ Am < 65	-	-	-	-	-	-
		G2	MERV 2-4	250	65 ≤ Am < 80	-	-	-	-	-	-
		G3	MERV 5-6	250	80 ≤ Am < 90	-	-	-	-	-	> 80 %
		G4	MERV 7-8	250	90 ≤ Am	-	-	-	-	-	> 90 %
MEDIUM	M	M5	MERV 9-10	450	-	40 ≤ Em < 60	-	-	-	> 50 %	-
		M6	MERV 11-12	450	-	60 ≤ Em < 80	-	-	50-65 %	> 60 %	-
FINE	F	F7	MERV 13	450	-	80 ≤ Em < 90	35	50-65 %	65-80 %	> 85 %	-
		F8	MERV 14	450	-	90 ≤ Em < 95	55	65-80 %	> 80 %	> 90 %	-
		F9	MERV 15	450	-	95 ≤ Em	70	> 80 %	> 95 %	> 95 %	-

Group	EN 1822	Integral Value of Efficiency in the MPPS in %	Integral Value of Penetration in the MPPS in %	Local Value of Efficiency in the MPPS in %	Local Value of Penetration in the MPPS in %	Local Value of Efficiency in the MPPS in %			
							E10	MERV 16	600
Suspending	E	E11	NA	600	≥ 95	≥ 5	-	-	-
		E12	NA	600	≥ 99.5	≥ 0.5	-	-	-
		H13	NA	600	≥ 99.95	≥ 0.05	≥ 99.75	≥ 0.25	≥ 99.75
	H	H14	NA	600	≥ 99.995	≥ 0.005	≥ 99.975	≥ 0.025	≥ 99.975
		U15	NA	600	≥ 99.9995	≥ 0.0005	≥ 99.9975	≥ 0.0025	≥ 99.9975
	U	U16	NA	600	≥ 99.99995	≥ 0.00005	≥ 99.99975	≥ 0.00025	≥ 99.99975
		U17	NA	600	≥ 99.999995	≥ 0.000005	≥ 99.99999	≥ 0.0001	≥ 99.99999

## TEST UNITS & CERTIFICATES



Kiwa Certificate

Eurovent Certificate

# COARSE FILTERS

**EN**  
779

**ISO**  
16890

- ✓ CONDITIONING AND HVAC SYSTEMS USED AS PRE-FILTER OR SECOND-STAGE FILTER
- ✓ LOW START PRESSURE DROP
- ✓ HIGH DUST HOLDING CAPACITY
- ✓ REDUCED OPERATION COSTS PROVIDES LONG SERVICE INTERVAL.

**PANFIL-KSZ**  
Panel Filters



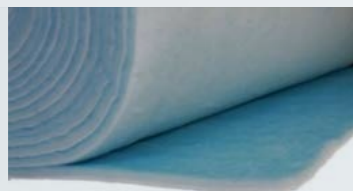
- EFFICIENCY G3 - G4
- SYNTHETIC MEDIA
- CARTBOARD FRAME

**PANFIL-GSZ**  
Panel Filters



- EFFICIENCY G3-G4
- SYNTHETIC MEDIA
- GALVANIZED FRAME

**SYNTHETIC**  
Roll Filters



- EFFICIENCY G2 - G3 - G4
- THICKNESS 10-15-20-22 mm
- TEMPERATURE 80 °C

**GLASS FIBER**  
Roll Filters



- EFFICIENCY G3-G4
- THICKNESS 30-60-100 mm
- TEMPERATURE 100 °C

**PANFIL**  
Synthetic Rigid Panel Filters



- EFFICIENCY G4 - M5
- SYNTHETIC RIGID MEDIA
- WITHOUT MESH
- PLASTIC FRAME

**PREBAG**  
Pocket Filters



- EFFICIENCY G3-G4
- SYNTHETIC MEDIA
- GALVANIZED AND PLASTIC FRAME

# FINE FILTERS

EN

779

ISO

16890

- ✓ CONDITIONING AND HVAC SYSTEMS USED AS FINE FILTERING KEEPS AIRBORNE PARTICLES AND AEROSOLS.
- ✓ LARGE FILTRATION SURFACE
- ✓ HIGH FLOW RATE,
- ✓ LOW INITIAL PRESSURE DROP
- ✓ COSTS PROVIDES LONG SERVICE INTERVAL

## MINIPAN

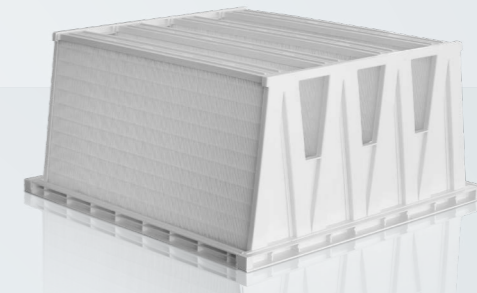
Mini Pleated Compact Filters



- EFFICIENCY M6-F7-F8-F9
- MICRO GLASS FIBER MEDIA
- ALUMINUM, PLASTIC OR GALVANIZED FRAME

## MULTIFIL - 292 or 420

V-Type Rigid Bag Filters



- EFFICIENCY M6-F7-F8-F9
- GLASS FIBER MEDIA
- PLASTIC OR METAL FRAME
- 80 °C OR 120 °C HT SERIES
- OPTIONAL PROTECTION GRID AND GASKET

## MULTIBAG

Synthetic Rigid Pocket Filters



- EFFICIENCY M5 - M6
- SYNTHETIC MEDIA
- METAL AND PLASTIC FRAME

## MULTIBAG

Pocket Filters



- EFFICIENCY M6-F7-F8
- GLASS FIBER MEDIA
- PLASTIC FRAME OR GALVANIZED FRAME

## MULTICELL

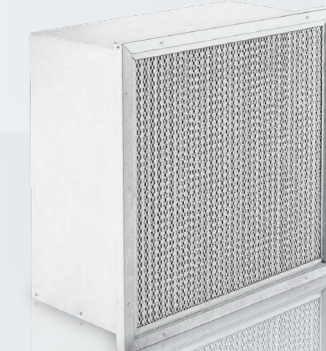
Rigid Mini Pleat Panel Filters



- EFFICIENCY M6-F7-F8-F9
- GLASS FIBER MEDIA
- PLASTIC FRAME 130 mm
- ALUMINUM OR GALVANIZED FRAME ANY DEPTH SIZE
- METAL FRAME 100-130-150-292 mm
- 80 °C OR 120 °C HT SERIES

## MULTI-AS

Aluminum Separator Filters



- EFFICIENCY M6-F7-F8-F9
- GLASS FIBER MEDIA
- ALUMINUM SEPARATOR
- METAL FRAME
- 250 °C HT SERIES

# HEPA-ULPA FILTERS



- ✓ USED FOR ABSOLUTE AIR FILTRATION IN CONTROLLED CONTAMINATION ENVIRONMENTS
- ✓ CLEAN ROOMS
- ✓ LAF BENCHES,
- ✓ MICROELECTRONICS,
- ✓ HOSPITAL AND OPERATING ROOMS.

## HEPAHOOD

Hepa Terminal Hood Filters



- EFFICIENCY E11 - E12 - H13 - H14 - U15 - U16 - U17
- ALUMINUM FRAME
- AIR OUTLET SURFACE MESH
- CONNECTED DIRECTLY TO CHANNEL
- DOUBLE PROB FOR DOP TEST AND PRESSURE DROP
- OPTIONAL AIR DAMPER

## HEPAGEL

Gel Gasket Hepa Filters



- EFFICIENCY E11 - E12 - H13 - H14 - U15 - U16 - U17
- LAMINAR AIR FLOW
- LEAKAGE FREE WITH GEL GASKET
- DOUBLE SIDE PROTECTION GRID
- GLASS FIBER MEDIA

## HEPA-V

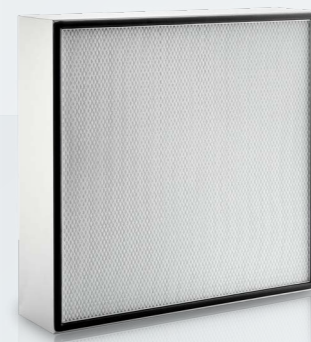
High Capacity Filters



- EFFICIENCY E10 - E11 - E12 - H13 - H14 - U15
- HIGH CAPACITY AIR FLOW
- LOW PRESSURE DROP
- LONG SERVICE LIFE
- HIGH CAPACITY DUST LOADING

## HEPALAM-HEPAFIL

Laminar Flow Absolute Filters



- EFFICIENCY E10 - E11 - E12 - H13 - H14 - U15 - U16 - U17
- LAMINAR AIR FLOW
- PU GASKET
- OPTIONAL DOUBLE SIDE PROTECTION GRID
- ALUMINIUM AND MDF FRAME

## HEPAFIL-292

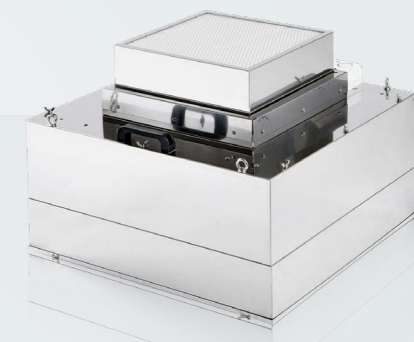
Depth Pleated Hepa Filters



- EFFICIENCY E11 - E12 - H13 - H14 - U15 - U16
- GLASS FIBER MEDIA
- 100 - 135 - 150 - 250 mm PLEATED DEPTH
- 80 °C OR 120 °C HT SERIES
- GALVANIZED STAINLESS STEEL OR MDF FRAME

## FFU

Fan Filter Unites



- EFFICIENCY E10 - E11 - E12 - H13 - H14 - U15 WITH PRE FILTER
- GLASS FIBER MEDIA
- METAL FRAME
- AIR VOLUME CONTROL
- OPTIONAL DPG
- COMPACT DESIGN
- PORTABLE SYSTEM

# ACTIVATED CARBON FILTERS

- ✓ THE PURIFICATION OF POLLUTANT GASES IN THE ATMOSPHERE
- ✓ GRANULAR ACTIVATED CARBON FILTERS ARE USED PLEATED ODOR ABSORBENTS ACTIVATED CARBON FILTERS.
- ✓ FILLED ACTIVATED CARBON FILTERS

# FILTER EQUIPMENTS & ACCESSORIES

- ✓ FILTER EQUIPMENTS
- ✓ PROVIDE EASY INSTALLATION AND SERVICE ABILITY ON FILTER APPLICATION.

**CARBOFIL**  
Pleated Odor A.C. Filters



- RELATIVE HUMIDITY 70%
- TEMPERATURE 50 °C
- PLASTIC FRAME
- CARBON PLEATED HIGH SURFACE AREA
- EASY TO INSTALL

**CARBOCAT**  
Cylindrical Cartridge Filters



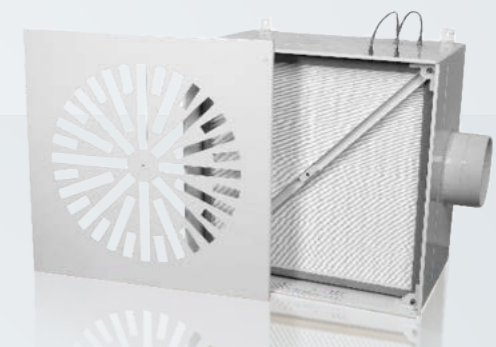
- EFFICIENCY UP TO 80%
- RELATIVE HUMIDITY 70%
- TEMPERATURE 50 °C
- OPTIONAL STAINLESS FRAME
- RE-FILLABLE CARTRIDGES
- LOWER PRESSURE DROP ACCORDING TO HIGH PERFORMANCE

**FILMOD**  
Filter Housing Frame



- METAL FRAME
- CAN BE USED FOR PANEL, BAG, COMPACT FILTERS
- LEAKPROOF PU GASKET
- FILTER FIX WITH 4 CLAMPS
- OPTIONAL WITH DIFFERENT SIZES

**HEPABOX**  
Hepa Filter Box



- METAL FRAME
- %100 WELDED
- RESISTANT TO HIGH PRESSURE DROP
- ELECTROSTATIC PAINTED AND STAINLESS STEEL OPTIONS
- NUMBER OF DUCT SIZE AND LOCATION CAN BE ADJUSTED ACCORDING TO THE REQUEST
- DIFFERENT DIFFUSOR TYPES CAN BE APPLICABLE



## ПРЕДСТАВНИЦТВО В УКРАЇНІ

Офіційний представник:

ТОВ «Альянс Ейр»

Адреса:

вул. Академіка Філатова 10а, оф. 3/11

02000 Київ, Україна

Телефон: +38 (044) 383-97-41,

Мобільний: +38 (067) 468-66-65,

Години роботи: Пн-Пт з 9:00 до 18:00

E-mail: [info@iqvent.com.ua](mailto:info@iqvent.com.ua),

[www.a-air.com.ua](http://www.a-air.com.ua)

## ВИРОБНИЦТВО В ПОЛЬЩІ

Компанія: IQ VENT Sp. z o.o

Адреса:

Plac Solny 14 lok.3

50-062 Wroclaw, Polska

E-mail: [info@iqvent.pl](mailto:info@iqvent.pl),

[www.IQvent.pl](http://www.IQvent.pl)

[info@iqvent.com.ua](mailto:info@iqvent.com.ua)

[www.iqvent.com.ua](http://www.iqvent.com.ua)