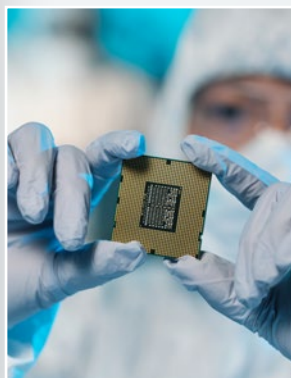


[www.iqvent.com.ua](http://www.iqvent.com.ua) | [info@iqvent.com.ua](mailto:info@iqvent.com.ua)



# CLEAN ROOM SERIES

**PHARMACEUTICAL INDUSTRY**  
**HOSPITALS**  
**MICRO ELECTRONICS**  
**LABORATORIES**



**TESTED, CERTIFIED, QUALIFIED**

**PRODUCTS FOR BETTER AIR QUALITY**

# AIR FILTERS

## INTERNATIONAL CLASSIFICATION

# STANDARDS

Group	Designation	European Filter Class	MERV Rating	Recommended Final Pressure Drop (Pa)	Average Arrestance (Am) of Synthetic dust (%)	Average Efficiency (Em) of 0,4µ Particles (%)	Minimum Efficiency for 0,4µ Particles (%)	NEW STANDARD ISO 16890			
								ISO ePM1	ISO ePM2,5	ISO ePM10	ISO COARSE
		EN 779-2012	ASHRAE 52.2								
COARSE	G	G1	MERV1	250	50 ≤ Am < 65	-	-	-	-	-	-
		G2	MERV 2-4	250	65 ≤ Am < 80	-	-	-	-	-	-
		G3	MERV 5-6	250	80 ≤ Am < 90	-	-	-	-	-	> 80 %
		G4	MERV 7-8	250	90 ≤ Am	-	-	-	-	-	> 90 %
MEDIUM	M	M5	MERV 9-10	450	-	40 ≤ Em < 60	-	-	-	> 50 %	-
		M6	MERV 11-12	450	-	60 ≤ Em < 80	-	-	50-65 %	> 60 %	-
FINE	F	F7	MERV 13	450	-	80 ≤ Em < 90	35	50-65 %	65-80 %	> 85 %	-
		F8	MERV 14	450	-	90 ≤ Em < 95	55	65-80 %	> 80 %	> 90 %	-
		F9	MERV 15	450	-	95 ≤ Em	70	> 80 %	> 95 %	> 95 %	-

Group		EN 1822			Integral Value of Efficiency in the MPPS in %	Integral Value of Penetration in the MPPS in %	Local Value of Efficiency in the MPPS in %	Local Value of Penetration in the MPPS in %	Local Value of Efficiency in the MPPS in %
		E10	MERV 16	600					
Suspended	E	E10	MERV 16	600	≥ 85	≥ 15	-	-	-
		E11	NA	600	≥ 95	≥ 5	-	-	-
		E12	NA	600	≥ 99.5	≥ 0.5	-	-	-
	H	H13	NA	600	≥ 99.95	≥ 0.05	≥ 99.75	≥ 0.25	≥ 99.75
		H14	NA	600	≥ 99.995	≥ 0.005	≥ 99.975	≥ 0.025	≥ 99.975
	U	U15	NA	600	≥ 99.9995	≥ 0.0005	≥ 99.9975	≥ 0.0025	≥ 99.9975
		U16	NA	600	≥ 99.99995	≥ 0.00005	≥ 99.99975	≥ 0.00025	≥ 99.99975
U17		NA	600	≥ 99.999995	≥ 0.000005	≥ 99.9999	≥ 0.0001	≥ 99.9999	

## TEST UNITS & CERTIFICATES



Kiwa Certificate

Eurovent Certificate

# FILTERS

- ✓ CONDITIONING AND HVAC SYSTEMS USED AS PRE-FILTER OR SECOND-STAGE FILTER
- ✓ LOW START PRESSURE DROP
- ✓ HIGH DUST HOLDING CAPACITY
- ✓ REDUCED OPERATION COSTS PROVIDES LONG SERVICE INTERVAL.

## PANFIL-KSZ

Panel Filters



- EFFICIENCY G3 - G4
- SYNTHETIC MEDIA
- CARTBOARD FRAME

## PANFIL-GSZ

Panel Filters



- EFFICIENCY G3-G4
- SYNTHETIC MEDIA
- GALVANIZED FRAME

## MULTIBAG

Synthetic Rigid Pocket Filters



- EFFICIENCY M5 - M6
- SYNTHETIC & GLASS FIBER MEDIA
- METAL AND PLASTIC FRAME

## MULTIBAG

Pocket Filters



- EFFICIENCY M6-F7-F8
- GLASS FIBER MEDIA
- PLASTIC FRAME OR GALVANIZED FRAME

## MINIPAN

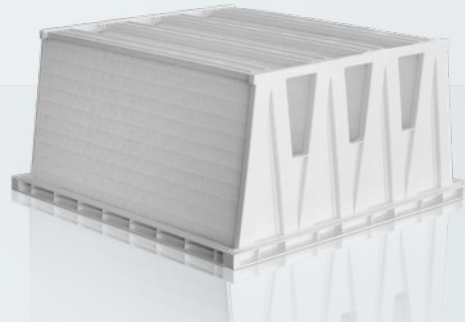
Mini Pleated Compact Filters



- EFFICIENCY M6-F7-F8-F9
- MICRO GLASS FIBER MEDIA
- ALUMINUM, PLASTIC OR GALVANIZED FRAME

## MULTIFIL - 292 or 420

V-Type Rigid Bag Filters



- EFFICIENCY M6-F7-F8-F9-E10-E11-E12-H13-H14
- GLASS FIBER MEDIA
- PLASTIC OR METAL FRAME
- 80 °C OR 120 °C HT SERIES
- OPTIONAL PROTECTION GRID AND GASKET
- FLANGE 25MM (20MM OPTION FOR 292)

## MULTICELL

Rigid Mini Pleat Panel Filters



- EFFICIENCY M6-F7-F8-F9
- GLASS FIBER MEDIA
- PLASTIC FRAME 130 mm
- ALUMINUM OR GALVANIZED FRAME ANY DEPTH SIZE
- METAL FRAME 100-130-150-292 mm
- 80 °C OR 120 °C HT SERIES

## MULTI-AS

Aluminum Separator Filters



- EFFICIENCY M6-F7-F8-F9
- GLASS FIBER MEDIA
- ALUMINUM SEPARATOR
- METAL FRAME
- 250 °C - 350 °C HT SERIES

# FILTERS

- ✓ USED FOR ABSOLUTE AIR FILTRATION IN CONTROLLED CONTAMINATION ENVIROMENTS
- ✓ CLEAN ROOMS
- ✓ LAF BENCHES,
- ✓ MICROELECTRONICS, HOSPITAL AND OPERATING ROOMS.

## HT HEPA (350°C)

High Temperature Hepa Filters



- EFFICIENCY H13 - H14
- FROM 0,5 M/S TO 1 M/S, DEPENDS ON FILTER SIZE
- WORKING TEMPERATURE TO PEAKS AT 350°C
- < ISO 5, IN HOT ZONE (EVEN WHEN TEMPERATURE IS VARYING)
- MAX. PRESSURE DROP: 700 PA

## HT HEPA (250°C)

High Temperature Hepa Filters



- EFFICIENCY H13 - H14
- FROM 0,5 M/S TO 1 M/S, DEPENDS ON FILTER SIZE
- WORKING TEMPERATURE TO PEAKS AT 250°C
- < ISO 5, IN HOT ZONE (EVEN WHEN TEMPERATURE IS VARYING)
- MAX. PRESSURE DROP: 700 PA

## HEPA-V

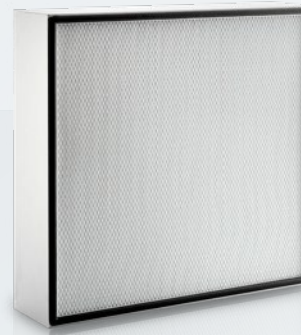
High Capacity Filters



- EFFICIENCY E10 - E11 - E12 - H13 - H14 - U15
- HIGH CAPACITY AIR FLOW
- LOW PRESSURE DROP
- LONG SERVICE LIFE
- HIGH CAPACITY DUST LOADING

## HEPALAM-HEPAFIL

Laminar Flow Absolute Filters



- EFFICIENCY E10 - E11 - E12 - H13 - H14 - U15 - U16 - U 17
- LAMINAR AIF FLOW
- PU GASKET
- OPTIONAL DOUBLE SIDE PROTECTION GRID
- ALUMINIUM AND MDF FRAME

## HEPAHOOD

Hepa Terminal Hood Filters



- EFFICIENCY  
E11 - E12 - H13 - H14 - U15 - U16 - U17
- ALUMINUM FRAME
- AIR OUTLET SURFACE MESH
- CONNECTED DIRECTLY TO CHANNEL
- DOUBLE PROB FOR DOP TEST AND PRESSURE DROP
- OPTIONAL AIR DAMPER

## HEPAGEL

Gel Gasket Hepa Filters



- EFFICIENCY  
E11 - E12 - H13 - H14 - U15 - U16 - U17
- LAMINAR AIR FLOW
- LEAKAGE FREE WITH GEL GASKET
- DOUBLE SIDE PROTECTION GRID
- GLASS FIBER MEDIA

## HEPAFIL-292

Depth Pleated Hepa Filters



- EFFICIENCY  
E11 - E12 - H13 - H14 - U15 - U16
- GLASS FIBER MEDIA
- 100 - 135 - 150 - 250 mm PLEATED DEPTH
- 80 °C OR 120 °C HT SERIES
- GALVANIZED STAINLESS STEEL OR MDF FRAME

## HEPACIL

Cylindrical HEPA Filters



- EFFICIENCY  
E10- E11 - E12 - H13 - H14
- GLASS FIBER MEDIA
- CLEAN ROOM VENTILATION SYSTEMS
- USED IN MICROELECTRONICS, FOOD, PHOTOGRAPHY, DATA CENTERS, HOSPITAL, MEDICAL EQUIPMENT INDUSTRY

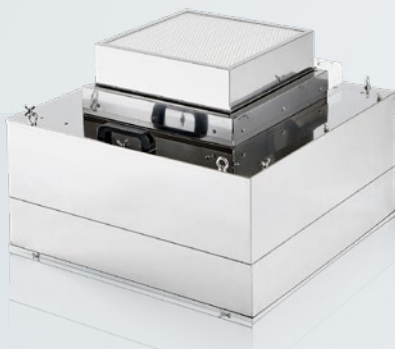
---

# FILTER EQUIPMENTS & ACCESSORIES

- ✓ FILTER EQUIPMENTS
- ✓ PROVIDE EASY INSTALLATION AND SERVICE ABILITY ON FILTER APPLICATION.

## FFU

Fan Filter Units



- EFFICIENCY  
E10 - E11 - E12 - H13 - H14 - U15 WITH PRE FILTER
- GLASS FIBER MEDIA
- METAL FRAME
- AIR VOLUME CONTROL
- OPTIONAL DPG
- COMPACT DESIGN
- PORTABLE SYSTEM

## LAMINAR FLOW

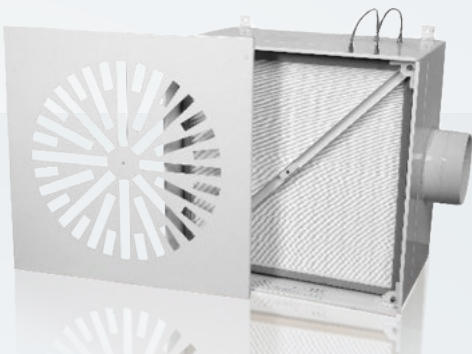
Laminar Flow Units



- Laminar flow units are designed for surgery rooms, medicine industries, chemistry industries, food production and similar areas. Surgery rooms in hospitals, intensive care units, sterilization rooms, IVF units, genetic laboratories and medical laboratories are classified as clean rooms. Laminar flow units provide laminar flows and this keeps the pressure constant and the room's air clean.
- They are made of 304 stainless steel.
- High performance H13 AND H14 HEPA filters are used.

## HEPABOX

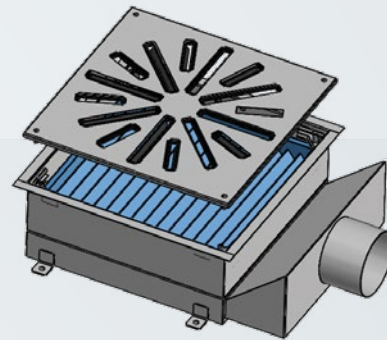
Hepa Filter Box



- PHARMACEUTICAL, HOSPITAL, LABORATORIES, ELECTRONICS, FOOD PROCESSING INDUSTRIES REQUIRING A VERY HIGH DEGREE OF CLEAN AIR
- THEY ARE DESIGNED FOR USE IN LAMINAR FLOW CLEAN ROOMS

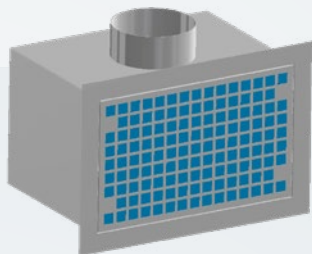
## HEPABOX

Hepa Filter Box



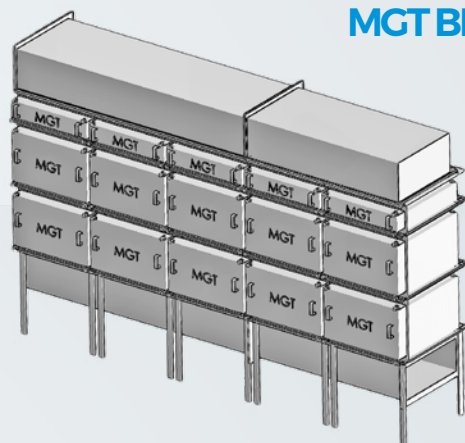
- THE HOODS ARE TYPICALLY INSTALLED IN ON INVERTED T-BAR GRID SUSPENDED FROM THE CEILING
- WHEN UNIT REACHES ITS MAXIMUM RECOMMENDED RESISTANCE, HEPA FILTER IS DISCARDED

## RETURN AIR FILTER BOX



- USED IN HYGIENIC AREAS FOR RECYCLING AIR
- COMPLETE 316 SS DESIGN
- SINGLE OR DOUBLE STAGE FILTER CAN BE MOUNTED
- COMPLETELY SEALED ONE-PIECE PU GASKET
- CAN BE MADE IN ANY DIMENSIONS
- DUCT CONNECTION PART CAN BE CIRCULAR OR RECTANGULAR
- THE DIFFUSER IS ATTACHED TO THE BOX WITH A SCREWLESS, COMFORTABLE BALL SYSTEM

## MGT BIBO

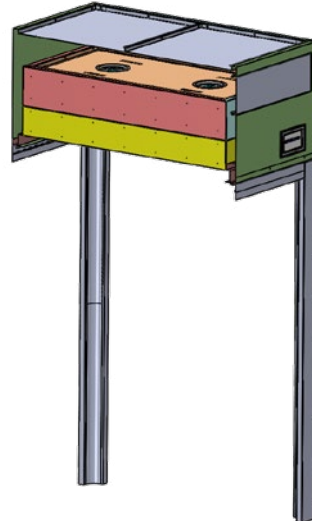
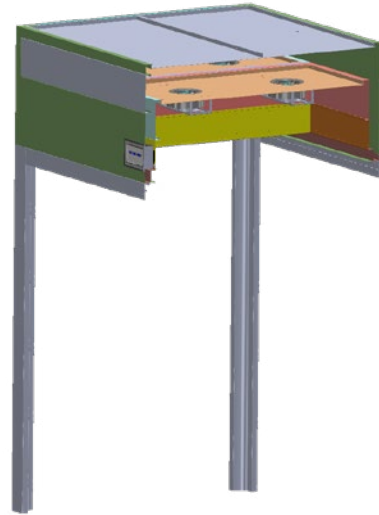


- SINGLE FILTER BANK
- COMPACT, MODULAR DESIGN
- FULLY ENCLOSING BAG SYSTEM FOR SAFE FILTER CHANGE
- SUITABLE FOR BOTH VERTICAL AND HORIZONTAL AIRFLOW
- ADJUSTABLE CLAMPING MECHANISM FOR POSITIVE AIR TIGHT SEALING
- SPACE SAVING SYSTEM
- SINGLE AND DOUBLE FILTRATION STAGE AVAILABLE

---

# LAMINAR FLOW UNIT

## (SAMPLING & WEIGHING)



- USED FOR SAMPLING , WEIGHING , PACKAGING AND PRODUCTION
- COMPLETE 304/316 SS DESIGN
- CLASS ISO 5 ACCORDING TO ISO 14644-1
- LAMINAR AIR FLOW UNDER PERFORATED DIFFUSER 0.45M/S (+-20%)
- PRE FILTRATION AND H14 HEPA FILTER
- TOUCH PANEL SCREEN CONTROL  
(AIR FLOW SENSORS , PRESSURE SENSORS , EC FANS , TEMPERATURE AND HUMUDITY SENSOR)
- CAN BE CONNECTED TO BMS SYSTEM
- CAN BE PRODUCED IN DESIRED DIMENSIONS
- TEST AEROSOLS INLET NOZZLE
- FOR SOLVENT AND POWDER APPLICATION
- PROTECTS THE OPERATOR AND PRODUCTION
- LIGHTING FOR WORKING AREA

## FILTER EQUIPMENTS & ACCESSORIES

- ✓ FILTER EQUIPMENTS
- ✓ PROVIDE EASY INSTALLATION AND SERVICE ABILITY ON FILTER APPLICATION.

### MGT CAV

CAV Terminal Units



- VOLUME FLOW RATE CAN BE SET USING AN EXTERNAL SCALE, NO TOOLS REQUIRED
- HIGH CONTROL ACCURACY
- NO ON-SITE TEST MEASUREMENTS REQUIRED FOR COMMISSIONING
- SUITABLE FOR AIRFLOW VELOCITIES OF UP TO 12 M/S
- ANY INSTALLATION ORIENTATION; MAINTENANCE-FREE

### MGT VAV

VAV Terminal Units



- FOR VOLUME FLOW RATE RANGES UP TO 36,000 M<sup>3</sup>/H OR 10,000 I/S
- SUITABLE FOR THE CONTROL OF VOLUME FLOW RATE, ROOM PRESSURE OR DUCT PRESSURE
- ELECTRONIC CONTROL COMPONENTS FOR DIFFERENT APPLICATIONS (EASY, COMPACT, UNIVERSAL, AND LAB CONTROL)
- HIGH CONTROL ACCURACY

AIR FILTRATION  
& AIR QUALITY



#### ПРЕДСТАВНИЦТВО В УКРАЇНІ

Офіційний представник  
ТОВ «Альянс Ейр»  
Адреса:  
вул. Академіка Філатова 10а, оф. 3/11  
02000 Київ, Україна  
Телефон: +38 (044) 383-97-41,  
Мобільний: +38 (067) 468-66-65,  
Години роботи:  
Пн-Пт з 9:00 до 18:00  
E-mail: [info@iqvent.com.ua](mailto:info@iqvent.com.ua),  
[www.a-air.com.ua](http://www.a-air.com.ua)

#### ВИРОБНИЦТВО В ПОЛЬЩІ

Компанія: IQ VENT Sp. z o.o  
Адреса:  
Plac Solny 14 lok.3  
50-062 Wroclaw, Polska  
E-mail: [info@iqvent.pl](mailto:info@iqvent.pl),  
[www.IQvent.pl](http://www.IQvent.pl)

[info@iqvent.com.ua](mailto:info@iqvent.com.ua)

[www.iqvent.com.ua](http://www.iqvent.com.ua)